

Portage la Prairie School Division Guidelines on **Personal Mobile Devices (PMD)**



Portage la Prairie will be implementing PMD restrictions commencing 2024-2025 school year.

Personal Mobile Device (PMD): Personal Mobile Devices include, but are not limited to, any piece of lightweight electronically powered equipment. These devices are typically consumer electronic devices capable of communications, data processing and/or utility. Examples range from hand-held lightweight electronic devices such as tablets, e-readers and smart phones to small devices such as MP3 players, smart watches and electronic toys.



- **Kindergarten to Grade 8 students are not permitted to use a PMD on school premises during the day, including extra-curricular activities and school outings. These schools are considered PMD-free learning environments.**

- Kindergarten to Grade 8 students are encouraged to leave their PMD at home when transported to school by bus or walking. If students bring a PMD to school, they must follow the protocols outlined at their school.
- Schools will provide specific direction regarding storage.
- The Portage la Prairie School Division will assume no responsibility in any circumstance for the loss, destruction, damage or theft of any PMD or for any communication costs associated with the authorized use of such devices. Students and families are responsible for locating such stolen items.



We recognize that there may be exceptional circumstances requiring accommodations. Administration may approve an exemption for a student with a medical (URIS) and/or student specific learning plan. Contact the school if you have questions regarding planning for your child.



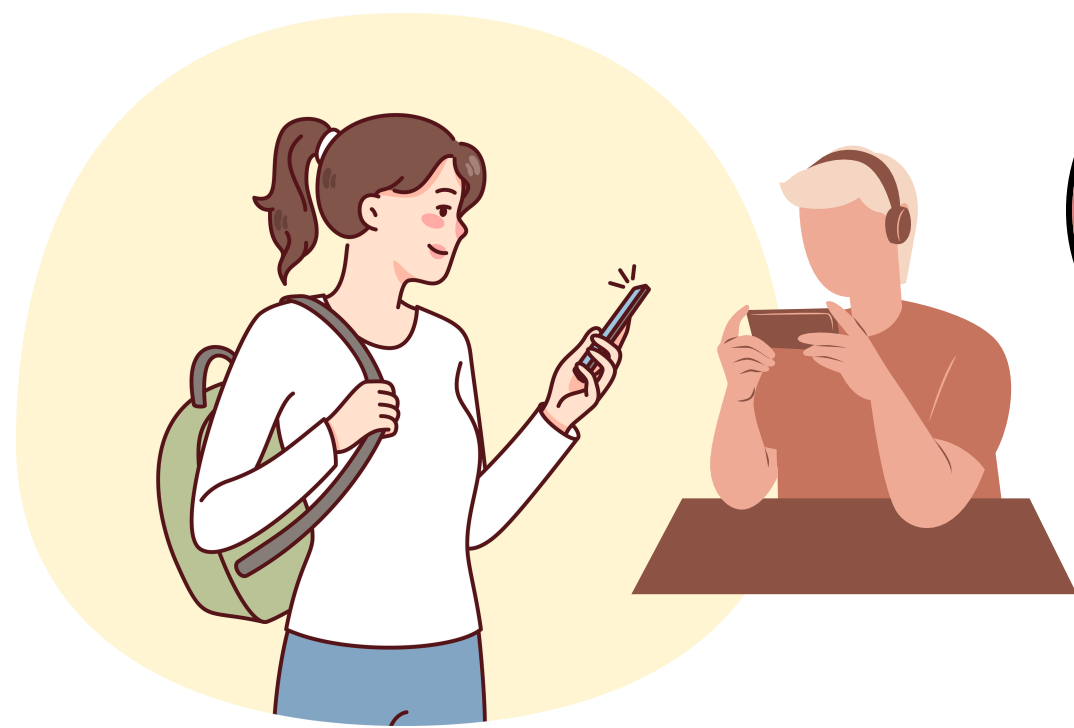
**Portage la Prairie
School Division**

Portage la Prairie School Division Guidelines on **Personal Mobile Devices (PMD)**



Portage la Prairie will be implementing PMD restrictions commencing 2024-2025 school year.

Personal Mobile Device (PMD): Personal Mobile Devices include, but are not limited to, any piece of lightweight electronically powered equipment. These devices are typically consumer electronic devices capable of communications, data processing and/or utility. Examples range from hand-held lightweight electronic devices such as tablets, e-readers and smart phones to small devices such as MP3 players, smart watches and electronic toys.



Grades 9-12 students will be restricted from using PMD during class unless directed by classroom teachers for educational purposes.

- Students may use their PMDs in the hallways during scheduled breaks.
- The Portage la Prairie School Division will assume no responsibility in any circumstance for the loss, destruction, damage or theft of any electronic communication device or for any communication costs associated with the unauthorized use of such devices. Students and families are responsible for locating such lost or stolen items.



We recognize that there may be exceptional circumstances requiring accommodations. Administration may approve an exemption for a student with a medical (URIS) and/or student specific learning plan. Contact the school if you have questions regarding planning for your child.



**Portage la Prairie
School Division**